


Non-Directional Butterfly Screener 1:

https://finviz.com/screener.ashx?v=311&f=sh_avgvol_o500,sh_opt_option,sh_price_o10,ta_averagetrueange_o1,ta_beta_o1,ta_pattern_channel&ft=4


FINANCIAL VISUALIZATIONS

Search ticker, company or profile


Home News Screener Maps Groups Portfolio Insider Futures Forex Crypto Backtests Elite
Thu DEC 12 2024 3:59 AM ET
Theme Help bhuupie

My Presets Order by Ticker Asc Signal None (all stocks) Tickers Filters

| Filters: 6 | | Descriptive (3) | | | Fundamental | | | Technical (3) | | | News | | | ETF | | | All (6) | | |
|-----------------------------|---------|------------------------------|------------|------------------------------|-------------|-------------------------------|-----------|---------------------------|-------------------------------------|-----------|------|--|--|-----|--|--|---------|--|--|
| Exchange | Any | Index | Any | Sector | Any | Industry | Any | Country | Any | | | | | | | | | | |
| Market Cap | Any | P/E | Any | Forward P/E | Any | PEG | Any | P/S | Any | | | | | | | | | | |
| P/B | Any | Price/Cash | Any | Price/Free Cash Flow | Any | EPS growth this year | Any | EPS growth next year | Any | | | | | | | | | | |
| EPS growth past 5 years | Any | EPS growth next 5 years | Any | Sales growth past 5 years | Any | EPS growth qtr over qtr | Any | Sales growth qtr over qtr | Any | | | | | | | | | | |
| Earnings & Revenue Surprise | Any | Dividend Yield | Any | Return on Assets | Any | Return on Equity | Any | Return on Investment | Any | | | | | | | | | | |
| Current Ratio | Any | Quick Ratio | Any | LT Debt/Equity | Any | Debt/Equity | Any | Gross Margin | Any | | | | | | | | | | |
| Operating Margin | Any | Net Profit Margin | Any | Payout Ratio | Any | Insider Ownership | Any | Insider Transactions | Any | | | | | | | | | | |
| Institutional Ownership | Any | Institutional Transactions | Any | Short Float | Any | Analyst Recom. | Any | Option/Short | Optionable | | | | | | | | | | |
| Earnings Date | Any | Performance | Any | Performance 2 | Any | Volatility | Any | RSI (14) | Any | | | | | | | | | | |
| Gap | Any | 20-Day Simple Moving Average | Any | 50-Day Simple Moving Average | Any | 200-Day Simple Moving Average | Any | Change | Any | | | | | | | | | | |
| Change from Open | Any | 20-Day High/Low | Any | 50-Day High/Low | Any | 52-Week High/Low | Any | All-Time High/Low | Any | | | | | | | | | | |
| Pattern | Channel | Candlestick | Any | Beta | Over 1 | Average True Range | Over 1 | Average Volume | Over 500K | | | | | | | | | | |
| Relative Volume | Any | Current Volume | Any | Trades | Elite only | Price | Over \$10 | Target Price | Any | | | | | | | | | | |
| IPO Date | Any | Shares Outstanding | Any | Float | Any | After-Hours Close | Any | After-Hours Change | Any | | | | | | | | | | |
| Latest News | Any | News Keywords | Elite only | Single Category | Any | Asset Type | Any | Sponsor | Any | | | | | | | | | | |
| Net Expense Ratio | Any | Net Fund Flows | Any | Annualized Return | Any | Tags | Any | ETF Filters | <input checked="" type="checkbox"/> | Reset (6) | | | | | | | | | |

Overview Valuation Financial Ownership Performance Technical ETF ETF Perf Custom Charts Tickers
Basic TA News Snapshot Maps Stats

#1 / 4 Total
Type: Candle
TA: on | off
Intraday
Daily
Weekly
Monthly
Refresh: 3min | off
Page 1 / 1



ACIW [NASDAQ, RUT]

Company: **ACI Worldwide Inc**


Country: **USA**


Industry: **Software - Infrastructure**

| | | | |
|---------------|--------|-------------|---------|
| Market Cap | 5.86B | EPS (ttm) | 2.11 |
| P/E | 26.47 | EPS this Y | 39.88% |
| Forward P/E | 29.71 | EPS next Y | 20.00% |
| PEG | 1.76 | EPS past 5Y | 13.76% |
| P/S | 3.62 | EPS next 5Y | 15.00% |
| P/B | 4.41 | EPS Q/Q | 120.69% |
| Dividend | - | Sales Q/Q | 24.44% |
| Insider Own | 1.23% | Inst Own | 98.03% |
| Insider Trans | -1.16% | Inst Trans | -2.07% |


Non-Directional Screener 2:

https://finviz.com/screener.ashx?v=311&f=sh_avgvol_o500,sh_opt_option,sh_price_o10,ta_averagetrueange_o1,ta_beta_o1,ta_pattern_horizontal2&ft=4


FINANCIAL VISUALIZATIONS



Investment Outlooks 2025
Positioning for change: Pragmatic thinking for a transitional era


Stay ahead. Read now. 

Home News Screener Maps Groups Portfolio Insider Futures Forex Crypto Backtests Elite Thu DEC 12 2024 4:06 AM ET Theme Help Login Register

My Presets Order by Ticker Asc Signal None (all stocks) Tickers Filters

| Filters: 5 | | Descriptive (3) | | | Fundamental | | | Technical (3) | | | News | ETF | All (6) | |
|-----------------------------|-------------------------|------------------------------|------------|------------------------------|-------------|-------------------------------|-----------|---------------------------|-------------------------------------|--|------|-----|-----------|--|
| Exchange | Any | Index | Any | Sector | Any | Industry | Any | Country | Any | | | | | |
| Market Cap. | Any | P/E | Any | Forward P/E | Any | PEG | Any | P/S | Any | | | | | |
| P/B | Any | Price/Cash | Any | Price/Free Cash Flow | Any | EPS growth this year | Any | EPS growth next year | Any | | | | | |
| EPS growth past 5 years | Any | EPS growth next 5 years | Any | Sales growth past 5 years | Any | EPS growth qtr over qtr | Any | Sales growth qtr over qtr | Any | | | | | |
| Earnings & Revenue Surprise | Any | Dividend Yield | Any | Return on Assets | Any | Return on Equity | Any | Return on Investment | Any | | | | | |
| Current Ratio | Any | Quick Ratio | Any | LT Debt/Equity | Any | Debt/Equity | Any | Gross Margin | Any | | | | | |
| Operating Margin | Any | Net Profit Margin | Any | Payout Ratio | Any | Insider Ownership | Any | Insider Transactions | Any | | | | | |
| Institutional Ownership | Any | Institutional Transactions | Any | Short Float | Any | Analyst Recom. | Any | Option/Short | Optionable | | | | | |
| Earnings Date | Any | Performance | Any | Performance 2 | Any | Volatility | Any | RSI (14) | Any | | | | | |
| Gap | Any | 20-Day Simple Moving Average | Any | 50-Day Simple Moving Average | Any | 200-Day Simple Moving Average | Any | Change | Any | | | | | |
| Change from Open | Any | 20-Day High/Low | Any | 50-Day High/Low | Any | 52-Week High/Low | Any | All-Time High/Low | Any | | | | | |
| Pattern | Horizontal S/R (Strong) | Candlestick | Any | Beta | Over 1 | Average True Range | Over 1 | Average Volume | Over 500K | | | | | |
| Relative Volume | Any | Current Volume | Any | Trades | Elite only | Price | Over \$10 | Target Price | Any | | | | | |
| IPO Date | Any | Shares Outstanding | Any | Float | Any | After-Hours Close | Any | After-Hours Change | Any | | | | | |
| Latest News | Any | News Keywords | Elite only | Single Category | Any | Asset Type | Any | Sponsor | Any | | | | | |
| Net Expense Ratio | Any | Net Fund Flows | Any | Annualized Return | Any | Tags | Any | ETF Filters | <input checked="" type="checkbox"/> | | | | Reset (6) | |

#1 / 32 Total Type: Candle TA: on | off Intraday Daily Weekly Monthly Refresh: 3min | off



AEM [NYSE]

Company: **Agnico Eagle Mines Ltd**


Country: **Canada**

Industry: **Gold**

| | | | |
|-------------|--------|-------------|--------|
| Market Cap | 43.81B | EPS (ttm) | 2.00 |
| P/E | 43.63 | EPS this Y | 84.90% |
| Forward P/E | 16.95 | EPS next Y | 24.98% |
| PEG | X | EPS past 5Y | - |
| | | EPS next 5Y | - |

Rangebound Butterfly Screener:

https://finviz.com/screener.ashx?v=311&f=sh_avgvol_o500,sh_opt_option,sh_price_o10,ta_averagetrueange_o1,ta_pattern_horizontal2&ft=4


FINANCIAL VISUALIZATIONS


Home News Screener Maps Groups Portfolio Insider Futures Forex Crypto Backtests Elite
Thu DEC 12 2024 4:05 AM ET
Theme Help bhuupie75

My Presets
Order by Ticker
Asc
Signal None (all stocks)
Tickers
Filters

| Filters: 5 | Descriptive (3) | Fundamental | Technical (2) | News | ETF | All (5) |
|-----------------------------|------------------------|------------------------------|---------------|------------------------------|------------|-------------------------------|
| Exchange | Any | Index | Any | Sector | Any | Industry |
| Market Cap. | Any | P/E | Any | Forward P/E | Any | PEG |
| P/B | Any | Price/Cash | Any | Price/Free Cash Flow | Any | EPS growth this year |
| EPS growth past 5 years | Any | EPS growth next 5 years | Any | Sales growth past 5 years | Any | EPS growth qtr over qtr |
| Earnings & Revenue Surprise | Any | Dividend Yield | Any | Return on Assets | Any | Return on Equity |
| Current Ratio | Any | Quick Ratio | Any | LT Debt/Equity | Any | Debt/Equity |
| Operating Margin | Any | Net Profit Margin | Any | Payout Ratio | Any | Insider Ownership |
| Institutional Ownership | Any | Institutional Transactions | Any | Short Float | Any | Analyst Recom. |
| Earnings Date | Any | Performance | Any | Performance 2 | Any | Volatility |
| Gap | Any | 20-Day Simple Moving Average | Any | 50-Day Simple Moving Average | Any | 200-Day Simple Moving Average |
| Change from Open | Any | 20-Day High/Low | Any | 50-Day High/Low | Any | 52-Week High/Low |
| Pattern | Horizontal S/R (Stror) | Candlestick | Any | Beta | Any | Average True Range |
| Relative Volume | Any | Current Volume | Any | Trades | Elite only | Price |
| IPO Date | Any | Shares Outstanding | Any | Float | Any | After-Hours Close |
| Latest News | Any | News Keywords | Elite only | Single Category | Any | Asset Type |
| Net Expense Ratio | Any | Net Fund Flows | Any | Annualized Return | Any | Tags |

Overview Valuation Financial Ownership Performance Technical ETF ETF Perf Custom Charts Tickers
Basic TA News Snapshot Maps Stats

#1 / 50 Total
Type: Candle TA: on | off Intraday Daily Weekly Monthly
Refresh: 3min | off



| AEM [NYSE] | | | |
|--------------------------------|--------|-------------|---------|
| Company Agnico Eagle Mines Ltd | | | |
| Country Canada | | | |
| Industry Gold | | | |
| Market Cap | 43.81B | EPS (ttm) | 2.00 |
| P/E | 43.63 | EPS this Y | 84.90% |
| Forward P/E | 16.95 | EPS next Y | 24.98% |
| PEG | - | EPS past 5Y | - |
| P/S | 5.60 | EPS next 5Y | - |
| P/B | 2.14 | EPS Q/Q | 217.36% |
| Dividend | 1.65% | Sales Q/Q | 31.25% |
| Insider Own | 0.11% | Inst Own | 63.91% |
| Insider Trans | 0.00% | Inst Trans | -2.13% |

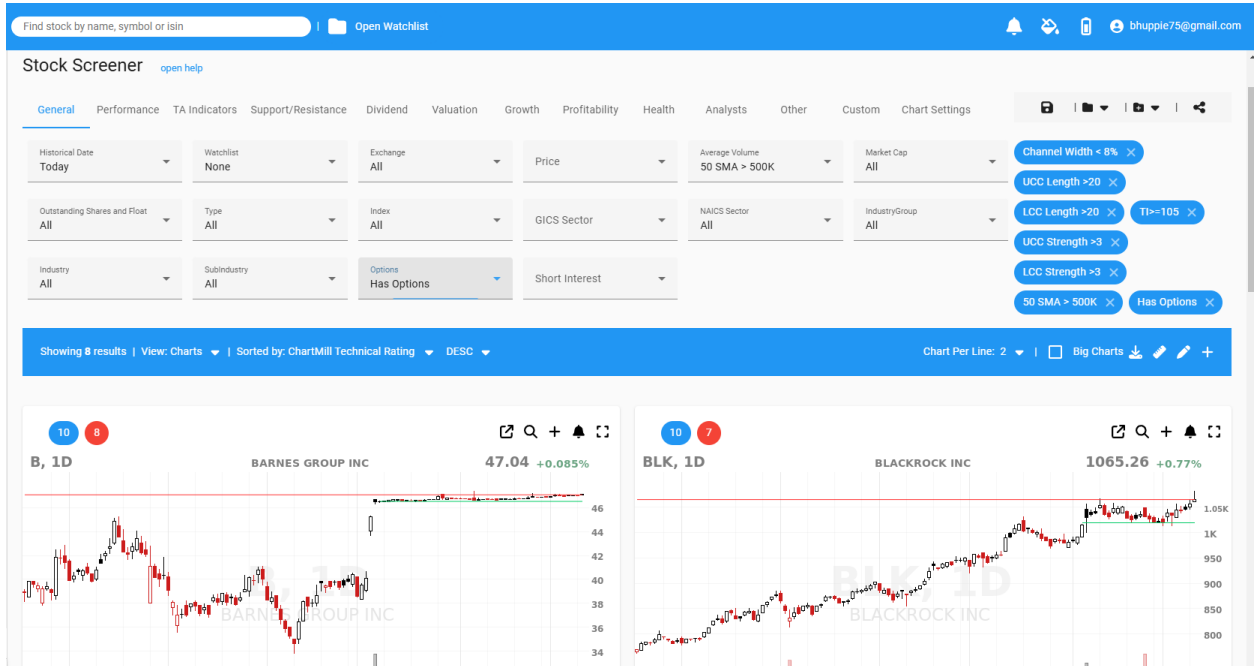
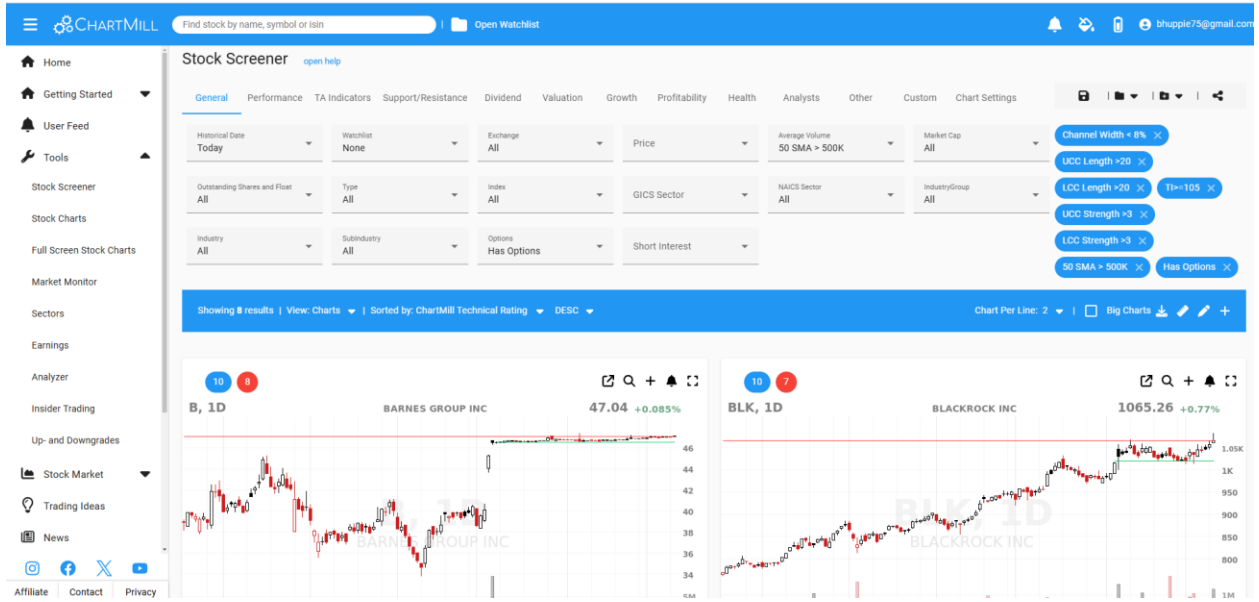
Rangebound Directional Screener 1:

https://finviz.com/screener.ashx?v=311&f=sh_avgvol_o1000,sh_opt_option,sh_price_o10,t_a averagetruerange_o1,ta_beta_o1,ta_pattern_channel&ft=4

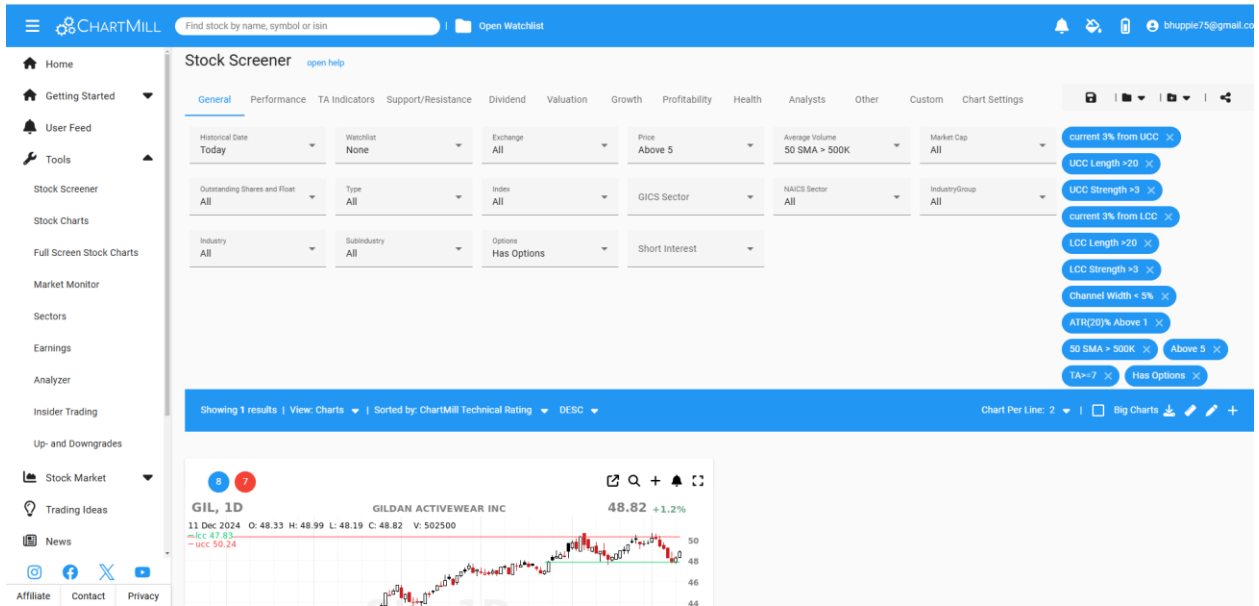
The screenshot displays the Finviz website's stock screener interface. At the top, the Finviz logo and navigation menu are visible. The main area is a filter grid with categories like Descriptive, Fundamental, Technical, and News. The 'Technical' filters are highlighted, showing settings for 'Channel', 'Beta', 'Over 1', and 'Average True Range'. Below the filters, a candlestick chart for INSM is shown with a 'Multiple Top' annotation and a price change of +1.58 (2.18%). To the right of the chart is a table of key financial and technical metrics for INSM.

| Category | Filter | Value |
|---------------|--------|---------|
| Market Cap | Any | 13.27B |
| P/E | - | -0.69% |
| Forward P/E | - | 19.33% |
| PEG | - | -4.82% |
| P/S | 38.71 | - |
| P/B | 27.45 | -14.13% |
| Dividend | - | 18.15% |
| Insider Own | 2.40% | 105.29% |
| Insider Trans | -8.02% | 8.56% |

Chartmill; Channel Squeeze 1: https://www.chartmill.com/stock/stock-screener?sid=66&f=ucc_wh_8,uccl_20,lcll_20,sl_ti_105_X,uccs_3,lccs_3,v1_50b500&v=3&type=CANDLES&o1=2&timeframe=DAILY&months=0&width=720&ia3=on&cl=F&nw=on



Chartmill Channel Squeeze 2: https://www.chartmill.com/stock/stock-screener?f=ucc_3,uccl_20,uccs_3,lcc_3,lccl_20,lccs_3,ucc_wh_5,atrptct_a_1,v1_50b500,p_pg5,sl_ta_7,X,m_opts&v=3&o3=2&months=0&width=720



Chartmill Channel Squeeze 3: https://www.chartmill.com/stock/stock-screener?f=wucc_wh_14,atr_pct_a_1,v1_50b300,wuccl_20,wuccs_2,wlcc_2,wlcc_20,wlccs_2,m_opts,exch_us&v=3&type=CANDLES&o1=2&timeframe=DAILY&months=0&width=720&ia3=on&cl=F&nw=on

The screenshot displays the Chartmill Stock Screener interface. The top navigation bar includes the Chartmill logo, a search bar, and a user profile. The left sidebar contains navigation options like Home, Getting Started, User Feed, Tools, Stock Screener, Stock Charts, Full Screen Stock Charts, Market Monitor, Sectors, Earnings, Analyzer, Insider Trading, Up- and Downgrades, Stock Market, Trading Ideas, and News. The main content area is titled "Stock Screener" and features a "General" tab with various filters. The filters are organized into columns: Historical Date (Today), Watchlist (None), Exchange (US Only), Price, Average Volume (50 SMA > 300K), Market Cap (All), Channel Width (< 14%), ATR(20) Above 1, 50 SMA > 300K, WUCC Length > 20, WUCC Strength > 2, current 2% from WLCC, WLCC Length > 20, WLCC Strength > 2, Has Options, and US Only. Below the filters, a status bar indicates "Showing 5 results" and "Sorted by: ChartMill Technical Rating DESC". The bottom section shows two candlestick charts: "WOW, 1D" (WIDEOPENWEST INC) with a price of 5.1 and a change of +0%, and "JNJ, 1D" (JOHNSON & JOHNSON) with a price of 146.64 and a change of -1.7%.